

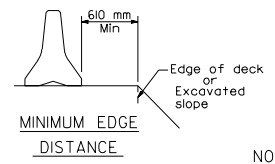
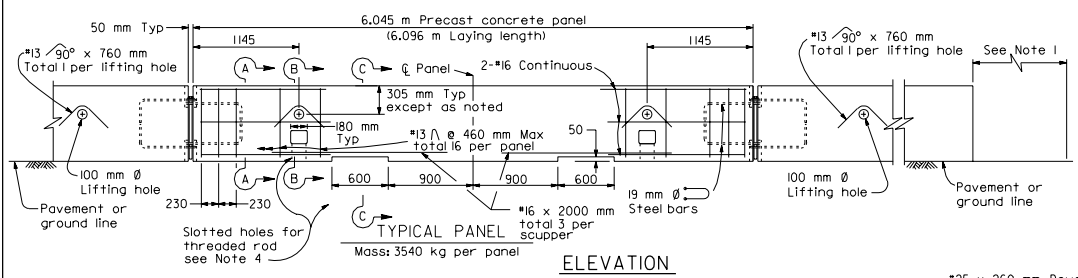


DIST	COUNTY	ROUTE	KILOMETER POST TOTAL PROJECT	SHEET NO.	TOTAL SHEETS
				17180	

REGISTERED CIVIL ENGINEER
 W. C. Anderson
 No. 17180
 Exp. 6-30-01
 CIVIL
 STATE OF CALIFORNIA

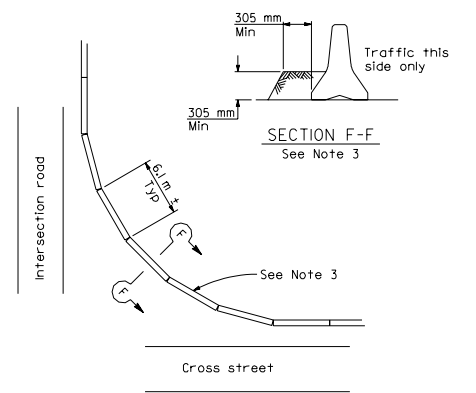
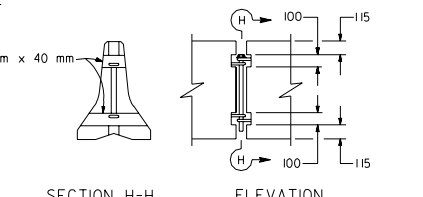
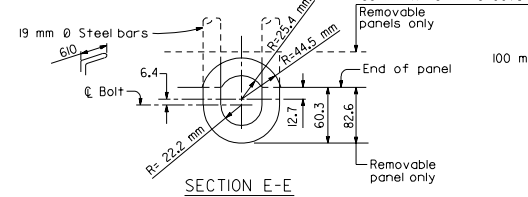
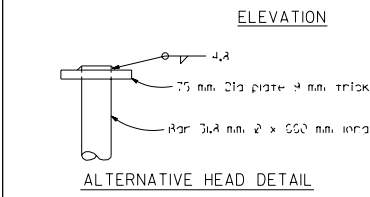
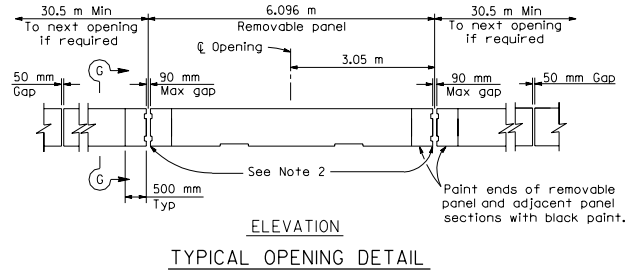
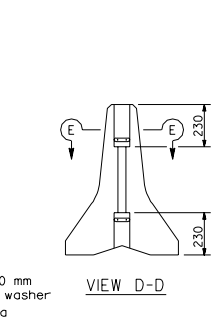
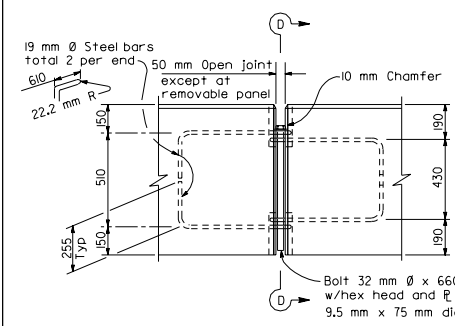
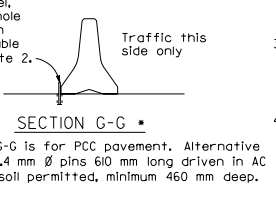
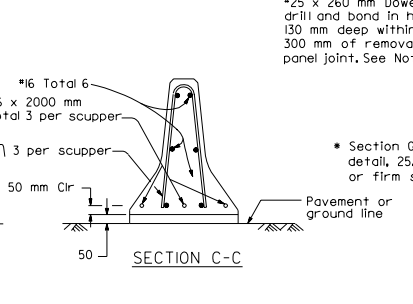
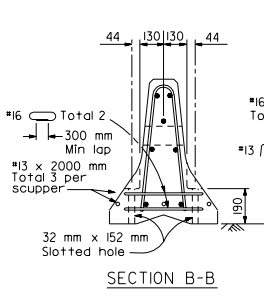
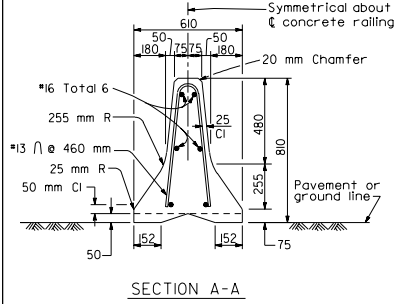
July 1, 1999
 PLANS APPROVAL DATE

The State of California or its officers or agents shall not be responsible for the accuracy or completeness of electronic copies of this plan sheet.



NOTES

- For end treatment, layout and crash cushions, where needed, see Project Plans or Special Provisions.
- All 90 mm gaps at removable panels are to be backed at the base with #25 x 260 mm dowel or 25.4 mm Ø pin each side of joint. See Section G-G.
- Where Temporary Railing (Type K) is placed on curves and radii that are too severe to connect panels with bolted joints, the railing is to be backed continuously with earth fill. See Section F-F.
- Attach units to deck slabs when required by Bridge Plans.



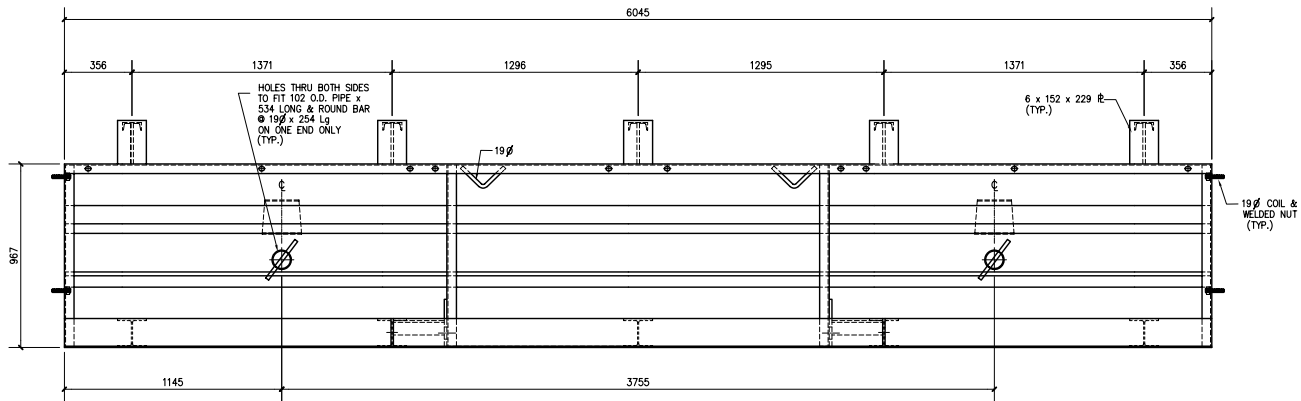
STATE OF CALIFORNIA
DEPARTMENT OF TRANSPORTATION

TEMPORARY RAILING (TYPE K)

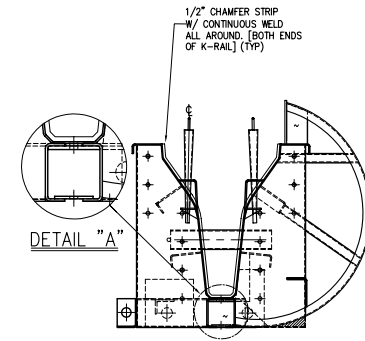
NO SCALE

ALL DIMENSIONS ARE IN MILLIMETERS UNLESS OTHERWISE SHOWN

1999 STD. PLAN T3

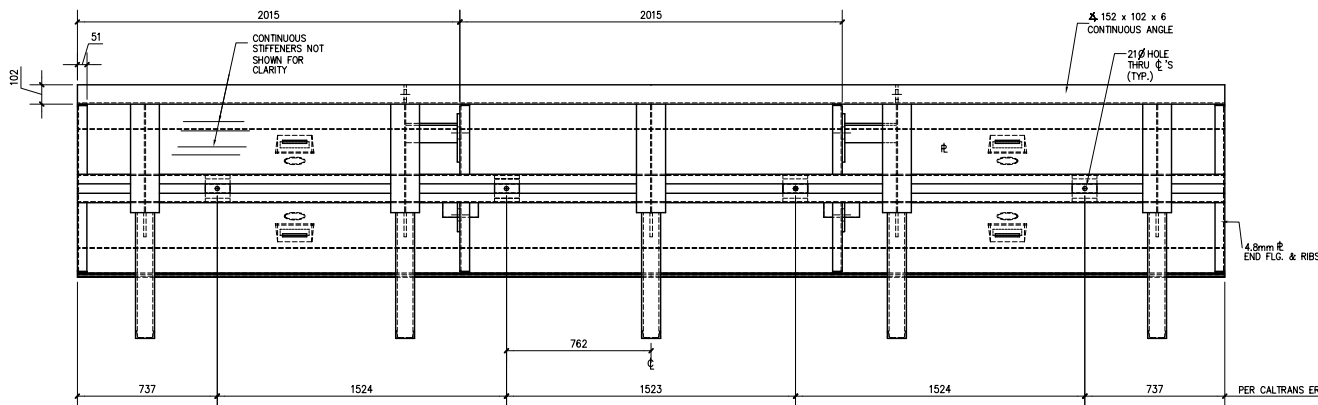


D ELEV. VIEW
SCALE: 1 : 12.5

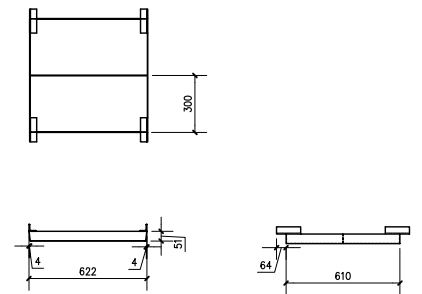


E RT. SIDE VIEW
SCALE: 1 : 12.5

QUANTITY	QTY/K-RAIL	DESCRIPTION
5	1	END B.H. "G" (510mm)
5	1	END B.H. "H" (430mm)
5	1	20' K-RAIL TEMP. BARRIER RAIL
10	2	BLOCK-OUT PIPE ASSY. (LIFTING HOLE)
20	4	BLOCK-OUT WEDGE ASSY. (ANCHORING PINS)
10	2	SCUPPER BLOCK-OUT (RECESS PAN ASSY.)



F BOTTOM VIEW
SCALE: 1 : 12.5



J RECESS PAN
SCALE: 1 : 12.5
QUANTITY REQ. = 10

NOTE:
SEE DWG #: F-1677A
FOR ADDITIONAL INFORMATION

ALL DIMENSIONS ARE IN MILLIMETERS U.N.O.

NOTES

- 1: ALL MATERIAL TO BE A36 GRADE STEEL, OR EQUIVALENT, UNO.
- 2: FINISH TO BE ONE COAT SHOP PAINT.
- 3: ALL WELDS TO BE PER ESTABLISHED WADCO SHOP STANDARDS & PROCEDURES FOR LIKE PRODUCTS.

REVISION

NO.	DATE	BY	CHKD	APPD

2625 SOUTH WILLOW AVE.
BLOOMINGTON, CA. 92316-3258
TEL: (909)874-7800
FAX: (909)874-8046

WADCO
INDUSTRIES, INC.

TEMPORARY RAILING (K-RAIL)
TYPE "K"

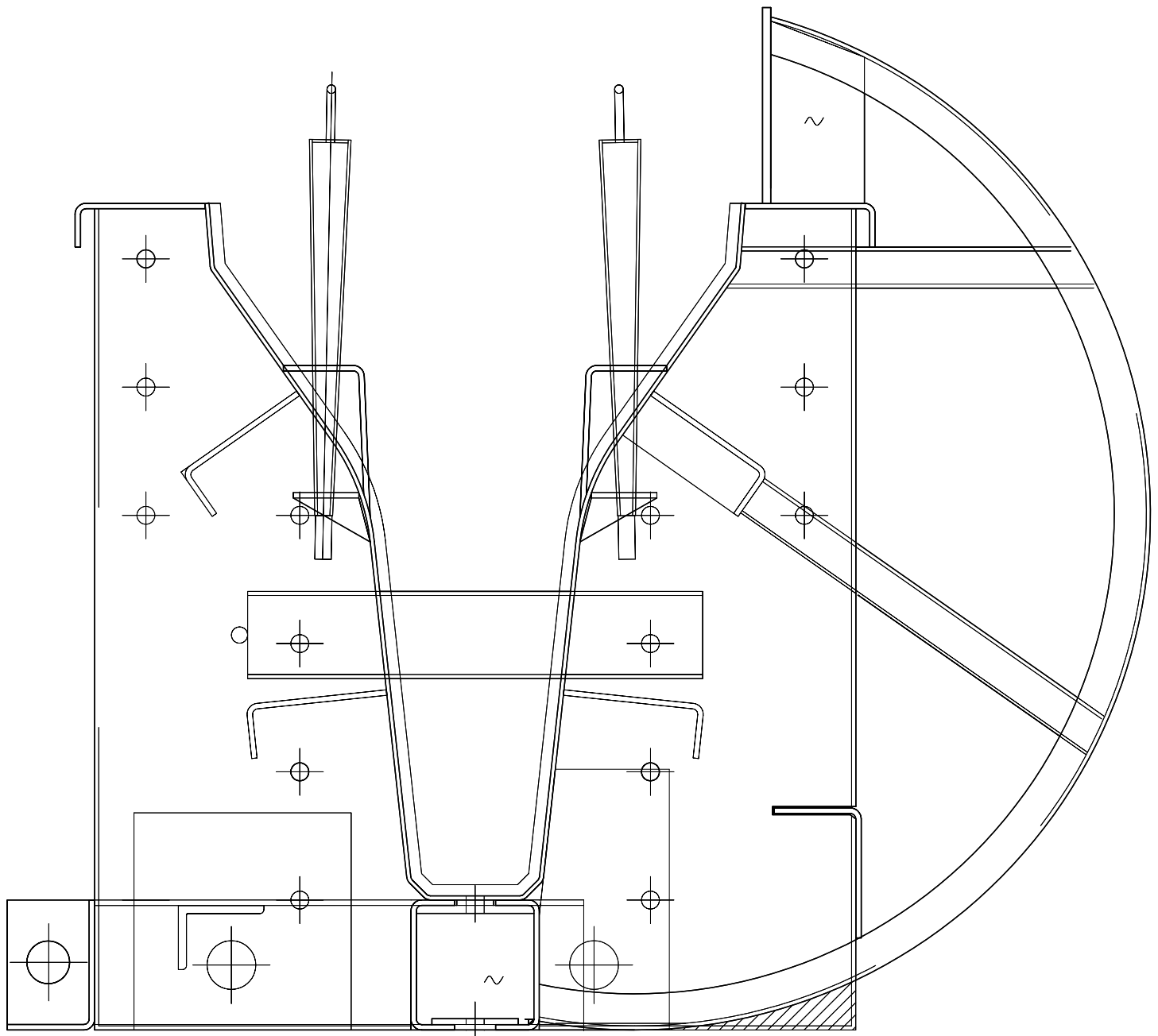
DATE: 8/16/89

REVIEWED BY: PAC

DESIGN: JDR

JOB NUMBER: REV 0

DRAWING NUMBER: F-1677B



2625 SOUTH WILLOW AVE.
 BLOOMINGTON, CA. 92316
 TEL: (909)874-7800
 FAX: (909)874-8046

INDUSTRIES, INC.

CUSTOMER:

TITLE: PRECAST K-RAIL FORM
 GENERIC CROSS-SECTION

DRAWN:

DATE:

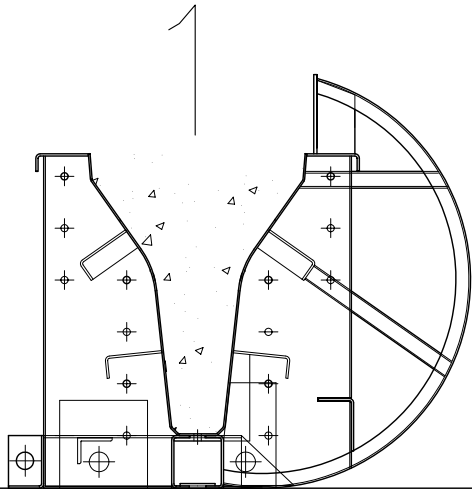
CHECKED:

REV DATE:

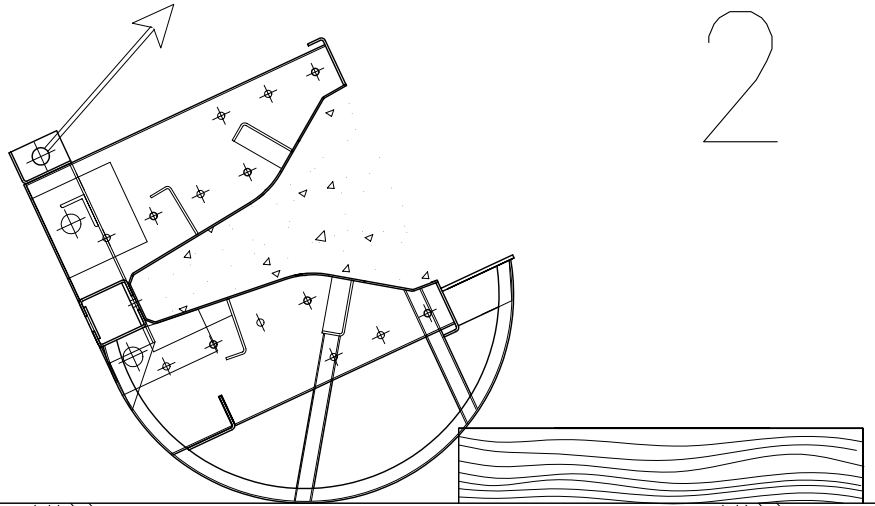
REV No:

JOB No:

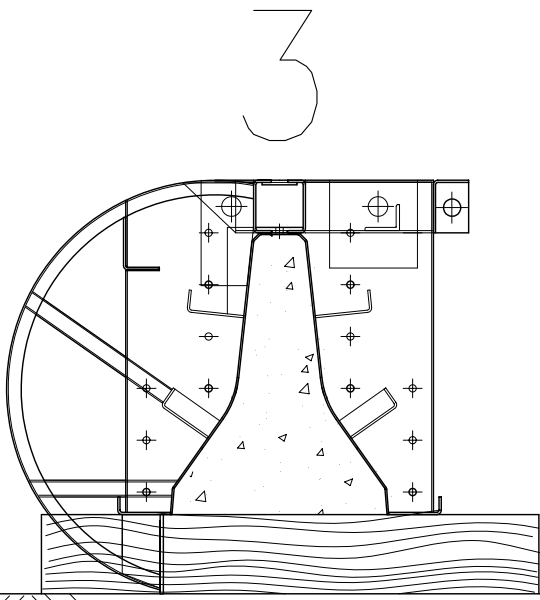
DRG No:



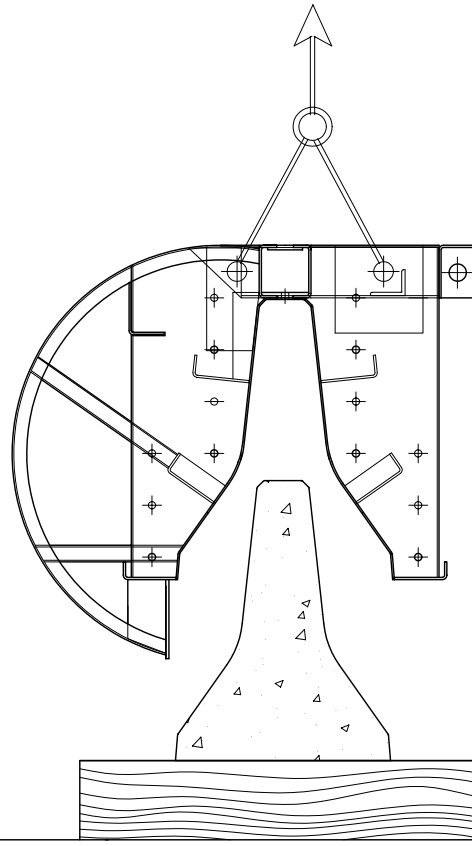
CASTING POSITION



ROLLING TO DUNNAGE



STRIPPING POSITION



STRIPPED PRODUCT



INDUSTRIES, INC.

2625 SOUTH WILLOW AVE.
 BLOOMINGTON, CA. 92316
 TEL: (909)874-7800
 FAX: (909)874-8046

CUSTOMER:

TITLE:

K-RAIL TEMPORARY BARRIER
 GENERAL ARRANGEMENT

DRAWN:

LDR

DATE:

03/15/01

CHECKED:

REV DATE:

REV No:

JOB No:

DRG No:

WS-0208