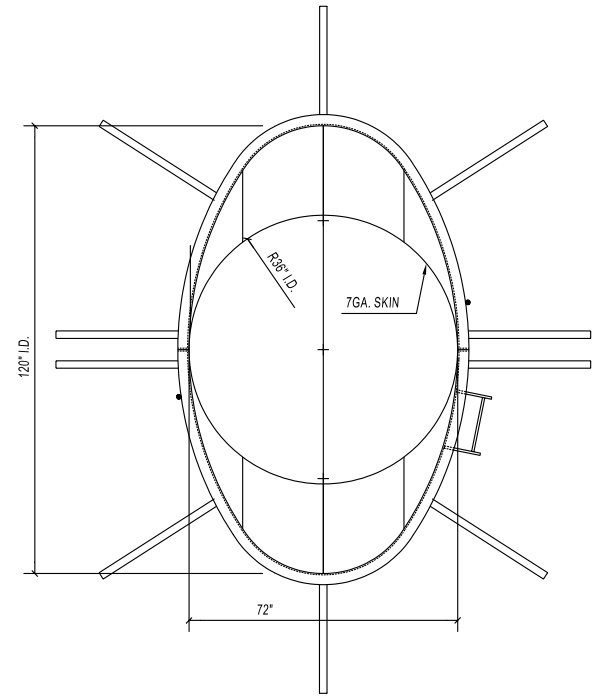
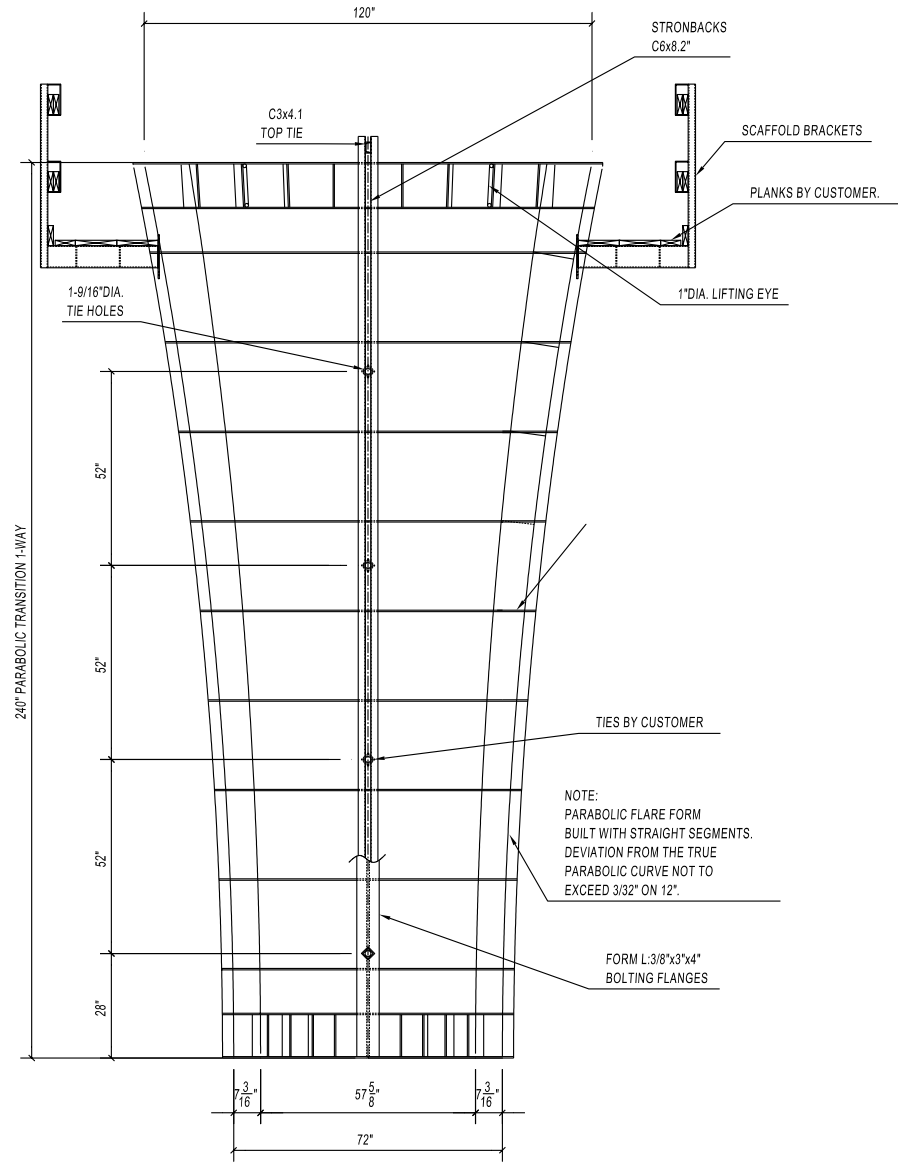


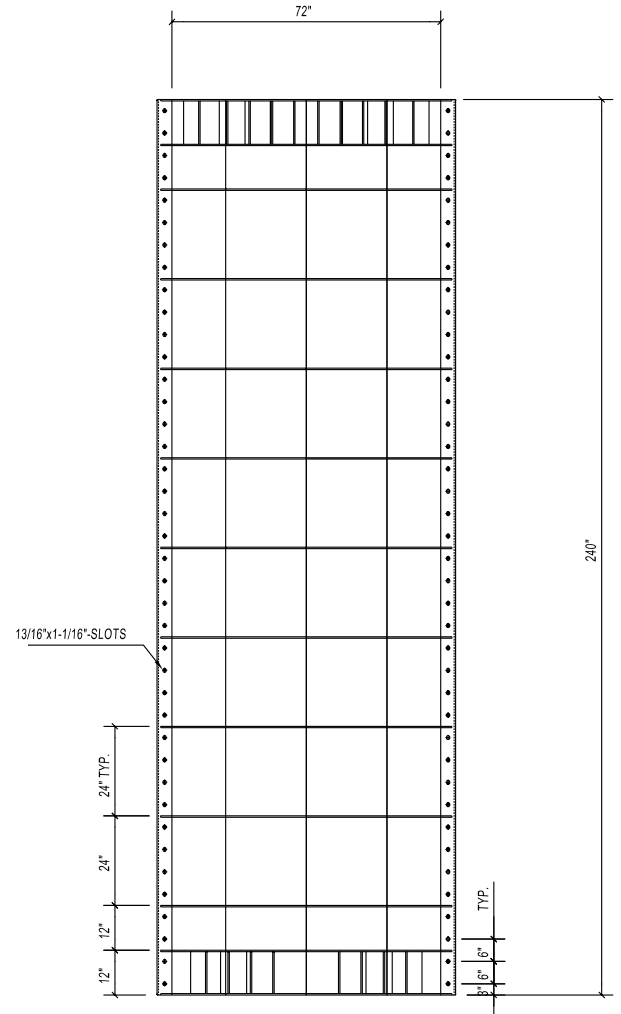
D CONCRETE DIMENSIONS
SCALE: 1:24



C PLAN VIEW-FORM
SCALE: 1:24



A FRONT ELEVATION
SCALE: 1:24
QUANTITY REQ. = 1



B SIDE ELEVATION
SCALE: 1:24

GENERAL NOTES

- 1: ALL MATERIAL TO BE A36 GRADE STEEL, OR EQUIVALENT, UNO.
- 2: FINISH TO BE ONE COAT SHOP PAINT.
- 3: WELDS GENERALLY TO BE 3/16" FILLET, UNO. WELDS TO BE LOCATED IN BOTH LENGTH & SPACING PER SHOP STANDARDS SET FOR ALL PREVIOUS SIMILAR PRODUCTS. SPECIFIC VARIATIONS ARE TO BE INSTALLED AS INDICATED.

REV#	DATE	REVISIONS

THIS DRAWING IS THE PROPERTY OF WADCO INDUSTRIES, INC. AND IS NOT TO BE REPRODUCED OR TRANSMITTED IN ANY FORM OR BY ANY MEANS, ELECTRONIC OR MECHANICAL, INCLUDING PHOTOCOPYING, RECORDING, OR BY ANY INFORMATION STORAGE AND RETRIEVAL SYSTEM. WITHOUT THE WRITTEN CONSENT OF WADCO INDUSTRIES, INC.

2625 SOUTH WILLOW AVE.
BLOOMINGTON, CA. 92316-3258
TEL: (909)874-7800
FAX: (909)874-8046

WADCO
INDUSTRIES, INC.

PARABOLIC FLARE
ELEVATION AND SIDE VIEW

DATE: 6/24/99
DRAWN: FLORIN UNGUREANU
REVIEWED BY: H.A. GOMEZ

JOB NUMBER:
DRAWING NUMBER:
REV 0
F1684